

## Paramotor Encounter

### A "NEW" HAZARD?

Fixed-wing pilots don't expect paramotor pilots above 1200 ft circling around a CTR in class E or G airspace... Oh boy, were WE wrong!

Paramotors come in single and two-seat versions and fly at speeds between 20-30 kts depending on the type of wing. Under right-of-way rules, paramotors are considered equal to any other motorised aircraft.

Their minimum flight altitude outside built-up areas is 500 ft; commonly their flights take place below 1200 ft, however, paramotors can be found at higher altitudes when the TMZs are lifted, up to FL055 in many parts of the Netherlands.

Currently, around 350 paramotor pilots are registered in the Netherlands. The government has established laws and regulations for takeoff and landing areas, allowing them to operate from official airfields such as Middenmeer or Texel; TUGs or temporal areas; and, from legally permitted private fields. Paramotor pilots must adhere to the same VFR rules as GA to ensure the safest possible practice of paramotoring and airspace use.

### Paramotor Categories

There are two categories:

#### 1. Foot-launched (motorised paraglider)



Credit: Peter Blokker

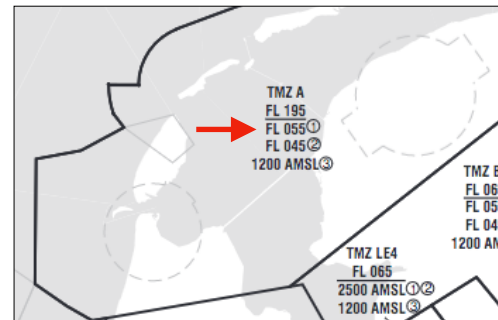
#### 2. Wheel-launched (paramotor trike)



Credit: Peter Blokker

### Transponder Mandatory Zones (TMZ)

A paramotor is exempted to carry a Mode S transponder, and is legally permitted to fly within a TMZ outside the designated hours indicated by the *NOTES* on the *Transponder Mandatory Zone Chart* to be found at *AIP Netherlands ENR6-2.6*. For example, see TMZ A, on a Monday evening, if you encounter a paramotor at 4,500 ft, it would be entirely within legal limits.



#### NOTES :

Within TMZs an operational mode S transponder is mandatory for all aircraft. Outside TMZs non-motorised aircraft (gliders, hanggliders, paragliders or balloons) and paramotors are exempted from mandatory carriage of a mode S transponder. See GEN 1.5 and ENR 2.2. CTRs are excluded from TMZs.

- ① MON-FRI before 0800 (0700) and after 1600 (1500), SAT, SUN, and HOL.
- ② MON-FRI 0800-1600 (0700-1500), EXC HOL: lower limit for non-motorised hanggliders and paragliders.
- ③ MON-FRI 0800-1600 (0700-1500), EXC HOL: lower limit 1200 ft AMSL.
- ④ Only active MON-FRI 0800-1600 (0700-1500); EXC HOL.

### Key Safety Issue: Inconspicuous Paramotors

Our fixed-wing aircrafts and paramotors are both allowed to fly in the same airspace; however, because paramotors don't carry a conspicuity device\*, they become:

- non identifiable on ATC radars
- undetectable by TCAS
- basically invisible to any electronic device

\*While the use of FLARM is being considered to increase conspicuity, is not yet widely adopted by paramotor pilots.

